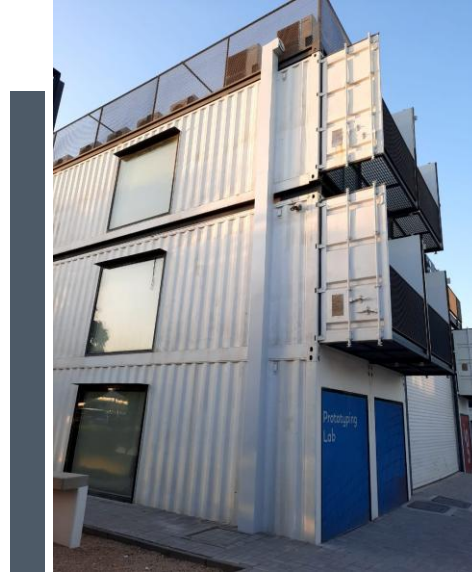
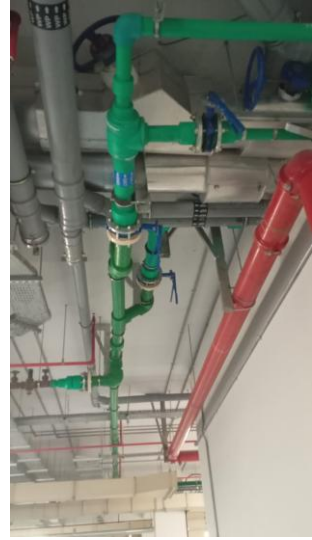


Super Touch Services Company Profile



Who we are

We are a MEP, HVAC, Fit Out and Fabrication contracting company operating in Dubai, Abu Dhabi and Sharjah since 2005.

Our team of engineers and professionals ensure that projects are completed within schedule and budget with precision and passion.

We aspire to create long lasting client relationships and support in bringing visions to reality.



What we do



Facility Maintenance

Preventative and correctional maintenance for commercial and residential buildings.

General, MEP and HVAC maintenance including insulation.

Flooring, Lighting and Painting

Installing cable trays and ventilation maintenance.



Renovation and Installation

Renovation and Installation for villas, apartments and commercial spaces.

Electrical, Sanitation and Plumbing work including irrigation systems

Carpentry - Wood, Glass, Gypsum and Aluminum

Low Voltage – CCTV, ANPR cameras



Interior Fit out

Furniture fabrication, carpentry and joinery

Wall paneling, external glass, ceiling and floor works, Painting works

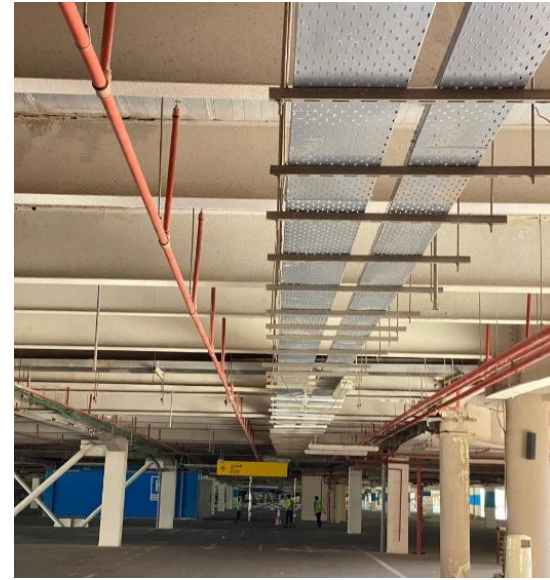
Electrical, Sanitation and Plumbing Installation including irrigation systems

Partitions, HVAC etc.



Electrical Work

- Maintenance and installation of electrical fittings and fixtures
- Installation of MDB/SMDB/DB
- Installation of cable trays and cable trunking
- Installations of cables of sizes up to 300 sqmm



Plumbing

- Installation of all bathroom and kitchen fixtures
- Installation and maintenance of water pumps (Booster and Transfer Pumps)
- Installation and repair of GRP Tanks



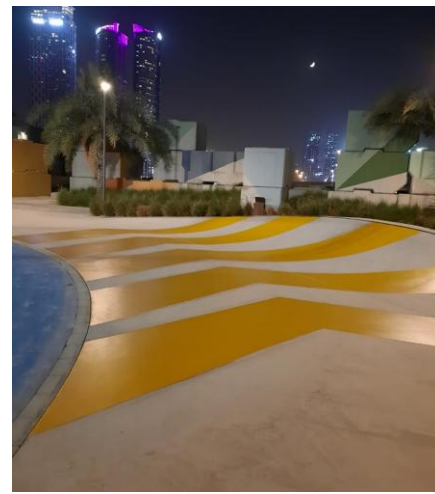
HVAC

- Installation of BTU Meters
- Installation of ductable AC and ducts
- Insulation of Chilled & Hot Water Pipes
- Refrigerant Gas Charging & Leak Detection.



Civil

- Blockwork
- Plastering
- Installation of floor and wall tiles
- Installation of marble and counter tops
- Installation of gypsum and false ceilings
- Installation of fire rated doors



Interior and Painting

- Joinery
- Wall Painting
- Floor/ Epoxy Painting
- Polishing and varnishing of woodwork



Others

- Installation of anti slip mats
- Swimming pool maintenance and equipment repair
- Installation of signage
- Glass and aluminium work (Partitions, doors, windows and mirrors)
- Installation of mechanical louvers
- Installation and marking of ramps
- Facade installation





Past Projects and Clients

Client Nakheel / Meydan

- Conversion and Space Optimization of Ground Floor Main Kitchen – Dubai College of Tourism
- Cable Tray & Trunking Installation and Aligning All Types of Cables in it – Meydan Grandstand Parking (approx. 4.5 Sq. km)
- Energizing Exhaust System and Installing CO Sensors – Meydan Grandstand Parking

Client TECOM

- Uplifting of PBU Internal Driveway & Pedestrian Walkway
- Premise reinstatement and rectification of damages caused by wind - d3
- Refurbishment of Boutique Studios - Dubai Studio City
- Aluminium Louver Enclosure, Rusted Pipe Support and Cross Over Ramps in Al Khail Gate Community



AED 10 Mln

Value of projects work completed since 2020





Get in touch!

Phone:

Aslam Parkar – 052 827 9016 / 050 498 1574

Email:

info@supertouchllc.com

admin@supertouchllc.com

Address:

M38 Payless Business Center, Golf Park Building, Al Garhoud